



COMPLIANT TIMBER JOINERY

Installation of Glazing

IMPORTANT

PLEASE READ THESE NOTES IN CONJUNCTION WITH THE FOLLOWING DETAILS.

All the following Glazing Details were tested during the testing program for NZS 4211 compliant Joinery.

All rebates were sealed with an Alkyd primer and all beads were fully primed before glazing. When using stains or oils as a finish coating (most oil coatings not recommended because they do not give long term protection) testing should be done to ensure they are compatible with the sealants to be used.

IMPORTANT BEAD GLAZING PROCEDURE, the bottom bead must be fitted first, both ends cut square to fit between the rebates, the Side beads can then be scribed on top of the bottom bead, mitred joints can be used at the top of the side beads and top bead. (The reason for the bottom bead fitted first is to stop water penetrating the bottom rebate through a mitre that usually opens up through shrinkage.)

The products (Tapes and Sealants) used in the tests were from various manufactures that were available at the testing facility at the time of testing. Other manufactures products can be substituted as long as the properties are the same..

continued.....

Glazing Type:

NOTES TO GLAZING SYSTEM

Window / Door Type:



www.jmf.nz.co.nz

Glazing Method

Date: 23/05/17 Issue: -

S8-A-02

IMPORTANT

PLEASE READ THESE NOTES IN CONJUNCTION WITH THE FOLLOWING DETAILS.

.....continued

Simson ISR 70-03 (from Bostik) is a special purpose sealant that is faster drying and requires less thickness to achieve a high adhesion between the Glass and bead, it is also paintable.

GLAZING DOUBLE GLAZED UNITS (IGU). After discussions with GANZ (Glass Association New Zealand) and IGUMA (Insulated Glazing Unit Manufactures Association) there are some IGU Manufactures that will not Warranty their IGU's in accordance with B2 or NZBC unless a drained system is used (Detail 58-A-06). However there are other IGU manufactures that will Warranty their IGU's using both the Drained and the fully sealed systems (Details 58-A-05 & 58-A-06). Both systems have been tested and some exceed the requirements of NZS 4211. It is VERY important to confirm with your glass supplier that they will give the required warranty for IGU'S.

SETTING BLOCKS

SSB3 (Glasscorp) is a silicone based product 3mm x 10mm x 150mm long. Position blocks then trim to width after the I.G.U has been fitted to fully support the I.G.U. Use two or more blocks side by side for larger units.

Glazing Type:

NOTES TO GLAZING SYSTEM

Window / Door Type:

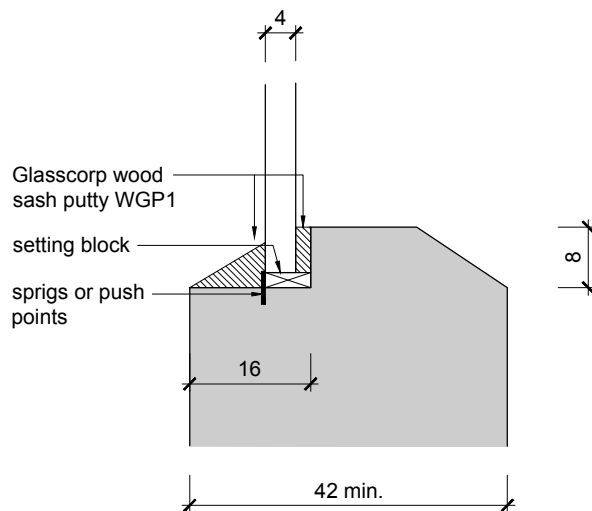


www.jmf.nz.co.nz

Glazing Method

Date: 23/05/17 Issue: -

S8-A-03



Notes:

1. tool fillet flush or lower to allow for painting 2mm onto glass face.
2. tested glass 4mm toughened.
3. rebates fully primed with Resene Alkyd primer - tested window with Alkyd undercoat.
4. not recommended with Cedar timber.
5. putty glazing only recommended for glass up to 4mm thick.

Glazing Type:

SINGLE GLAZED

Window / Door Type:

FIXED - PUTTY



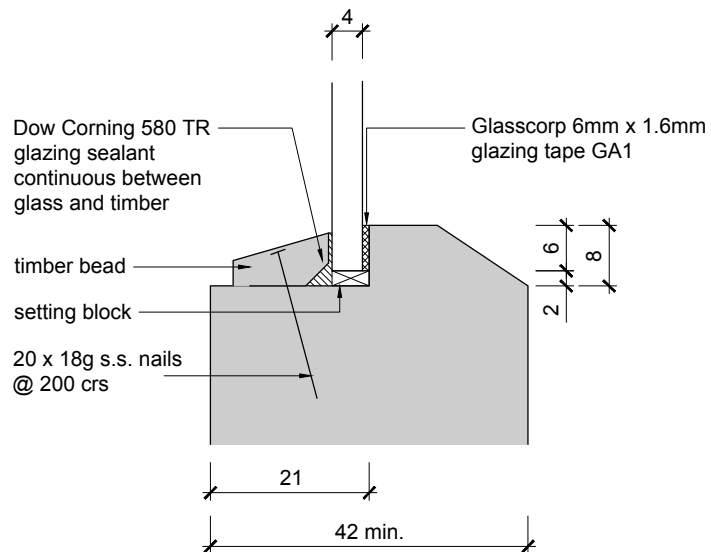
www.jmfnz.co.nz

Glazing Method

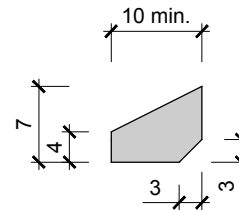
Date: **23/05/17**

Issue: **-**

S8-A-04



Bead Option



Notes:

1. tested glass 4mm toughened.
2. rebates fully primed with Resene Alkyd primer - tested window with Alkyd undercoat.
3. deepen rebate for thicker glass and larger sizes.

Glazing Type:

SINGLE GLAZED

Window / Door Type:

FIXED - BEAD



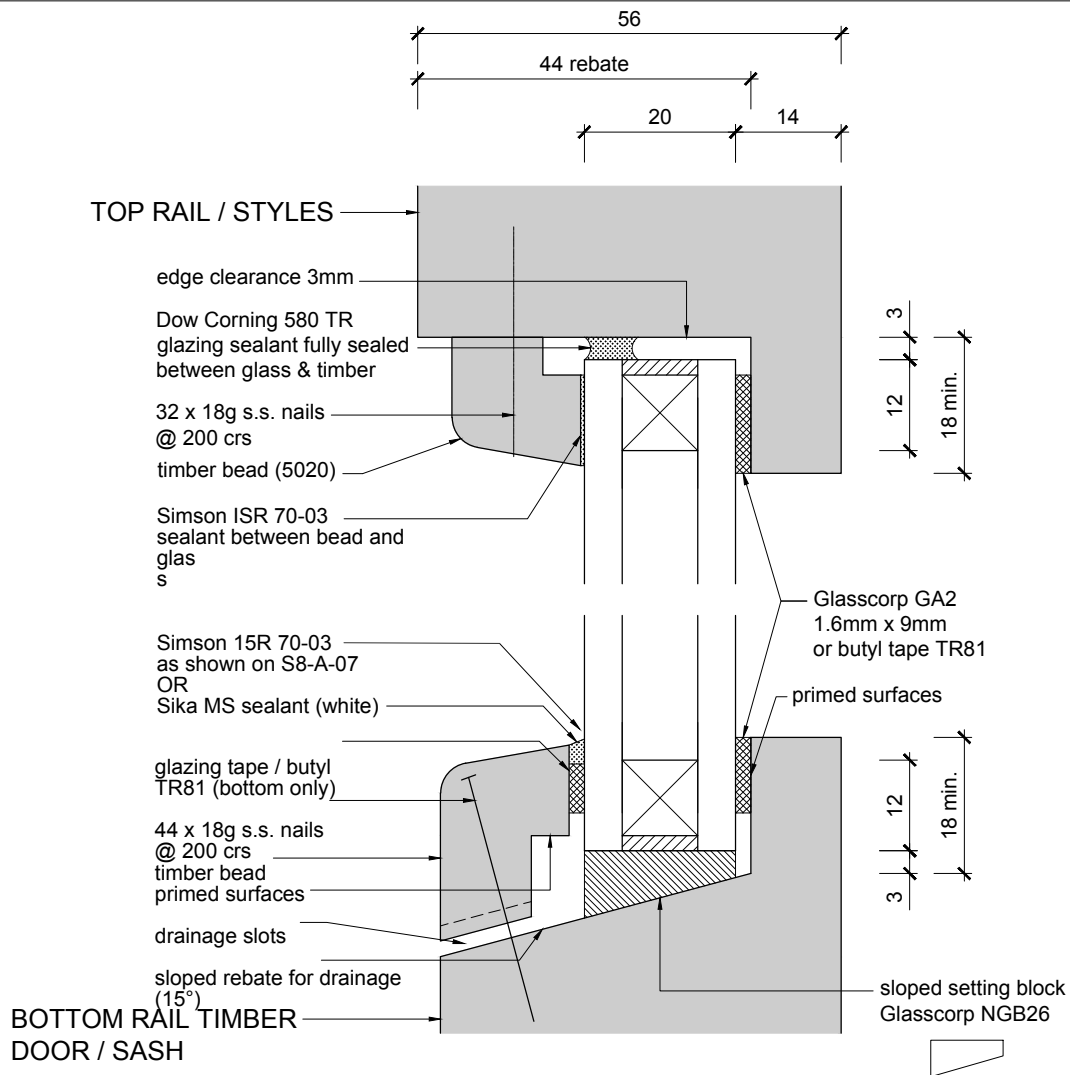
www.jmfnz.co.nz

Glazing Method

Date: 23/05/17

Issue: -

S8-A-05



Notes:

1. rebates fully primed with Resene Alkyd primer - tested window with Alkyd undercoat.
2. Drainage slots, one at each end of bead, then at 400 centres.

Glazing Type:

DOUBLE GLAZED SEALED & DRAINED

Window / Door Type:

DOOR / SASH - SLOPED BEAD



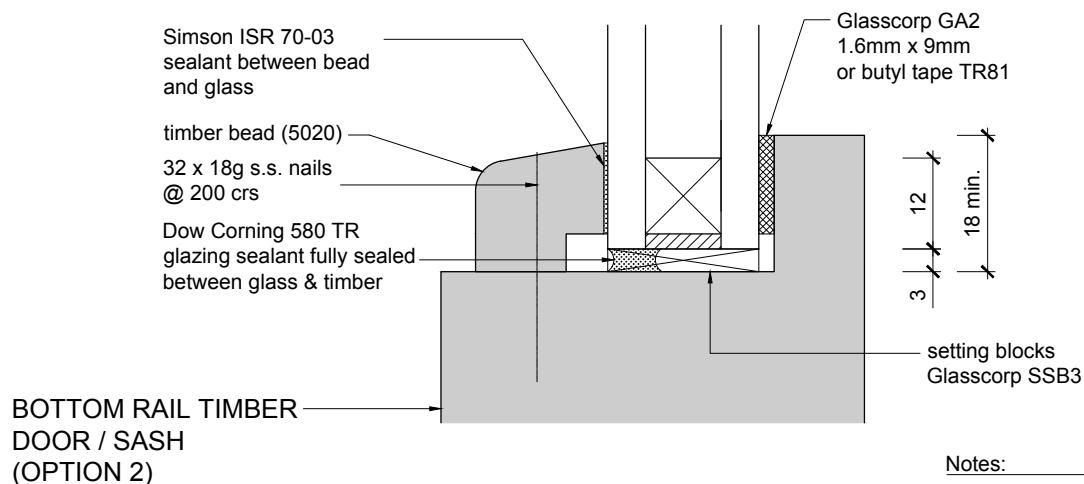
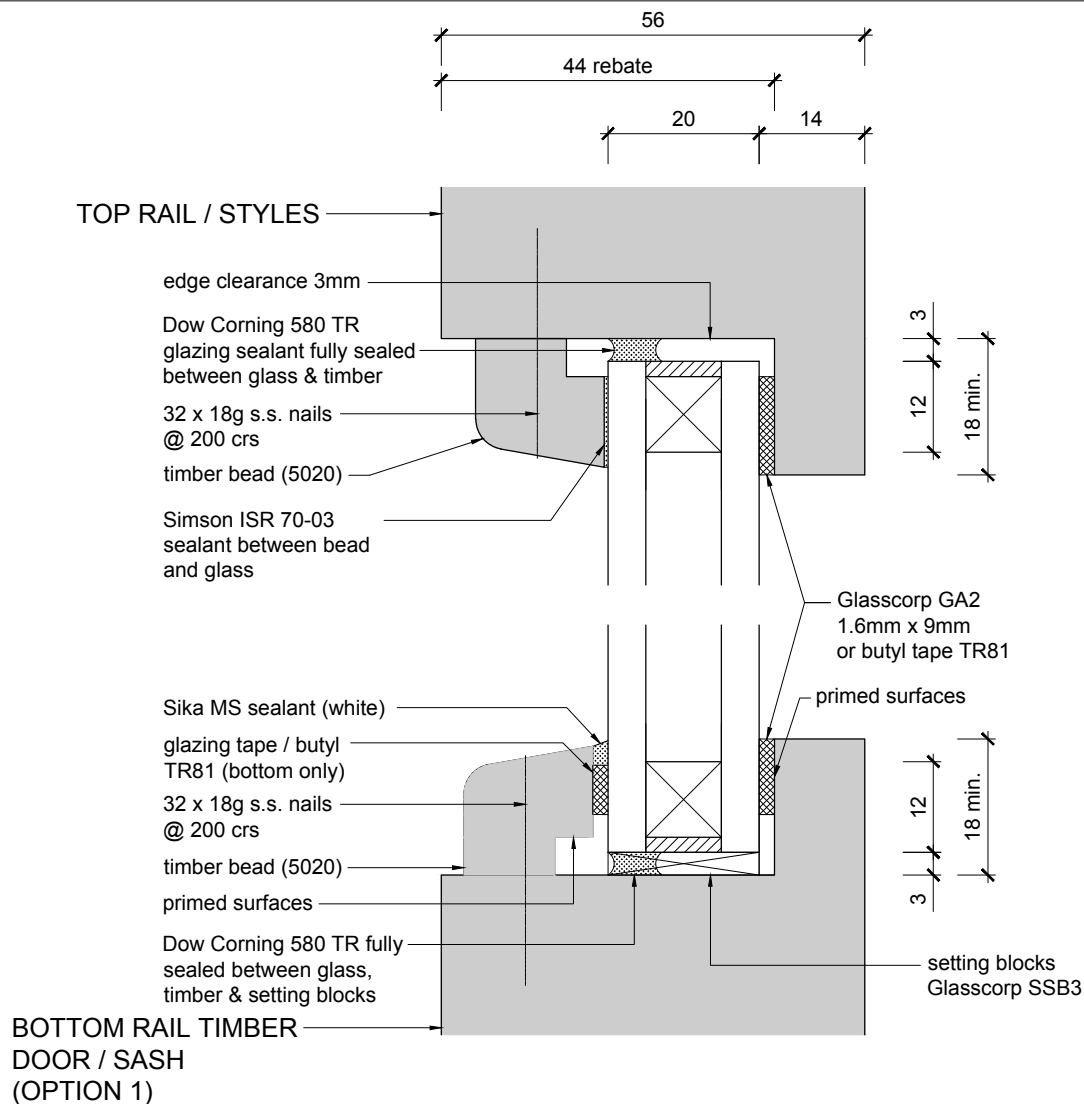
www.jmf.nz.co.nz

Glazing Method

Date: 23/05/17

Issue: -

S8-A-06



Notes:

- rebates fully primed with Resene Alkyd primer - tested window with Alkyd undercoat.
- Glasscorp codes for backing tapes.

**IMPORTANT - READ INTRODUCTION
NOTES ON THIS SYSTEM**

Glazing Type:

DOUBLE GLAZED FULLY SEALED

Window / Door Type:

DOOR / SASH



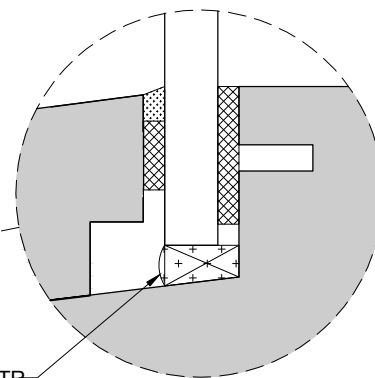
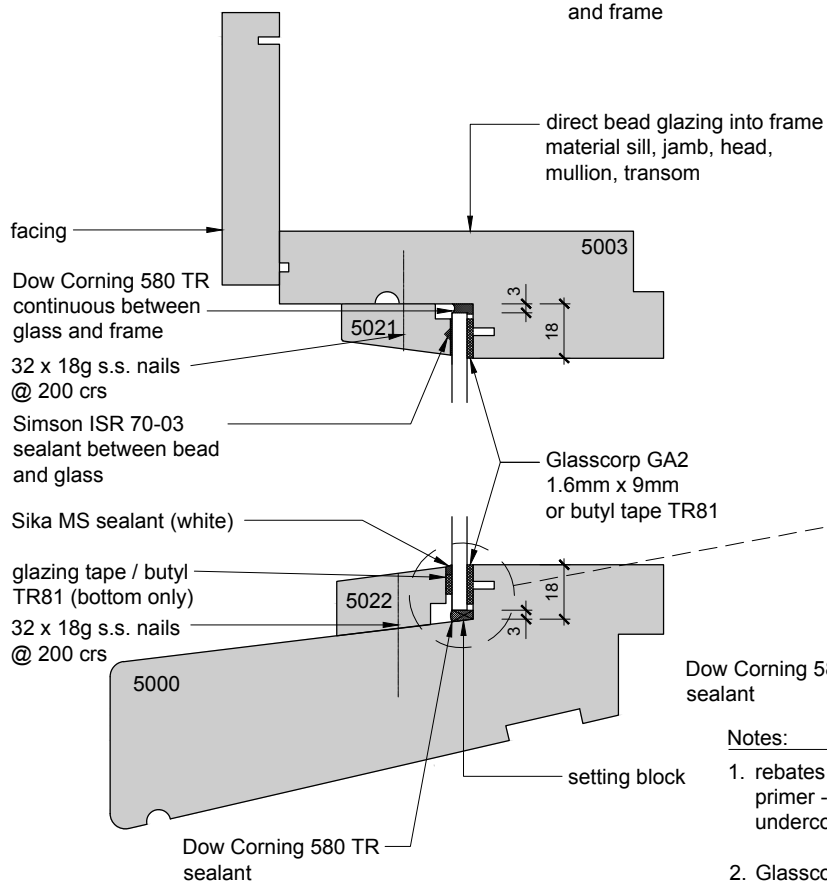
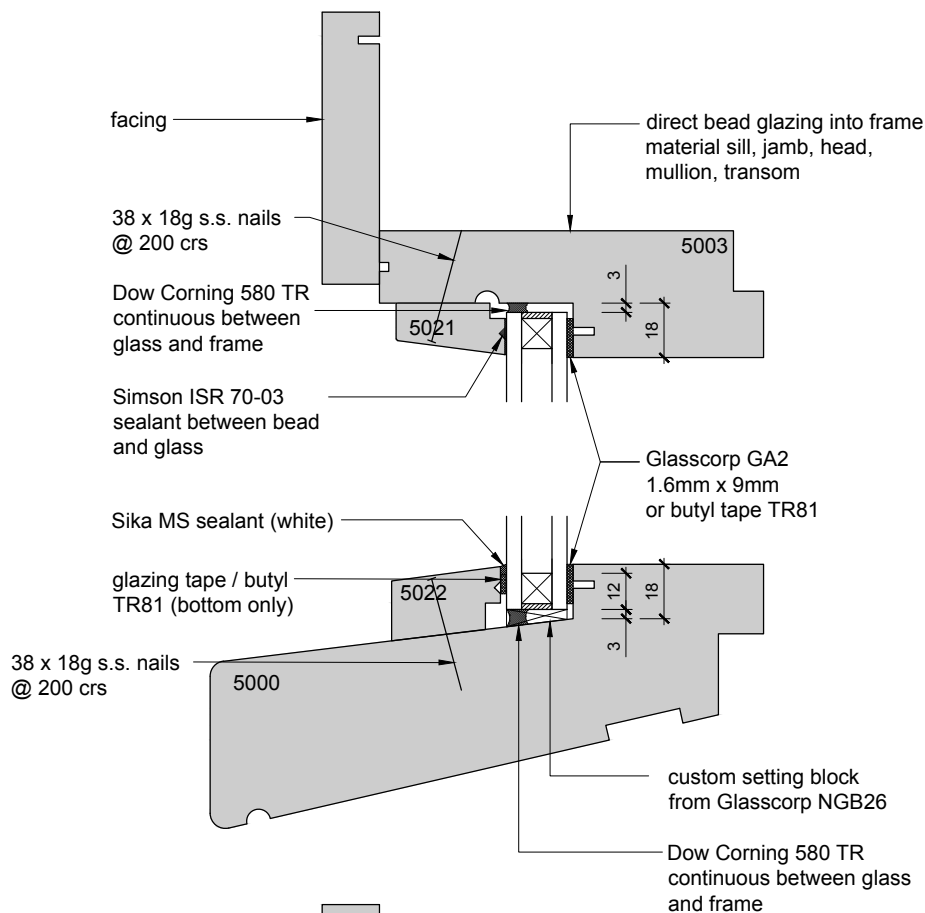
www.jmf.nz.co.nz

Glazing Method

Date: **23/05/17**

Issue: **-**

S8-A-07



Notes:

1. rebates fully primed with Resene Alkyd primer - tested window with Alkyd undercoat.

2. Glasscorp codes for backing tapes.

Glazing Type:

DOUBLE / SINGLE GLAZED

Window / Door Type:

DIRECT FIX TO FRAME



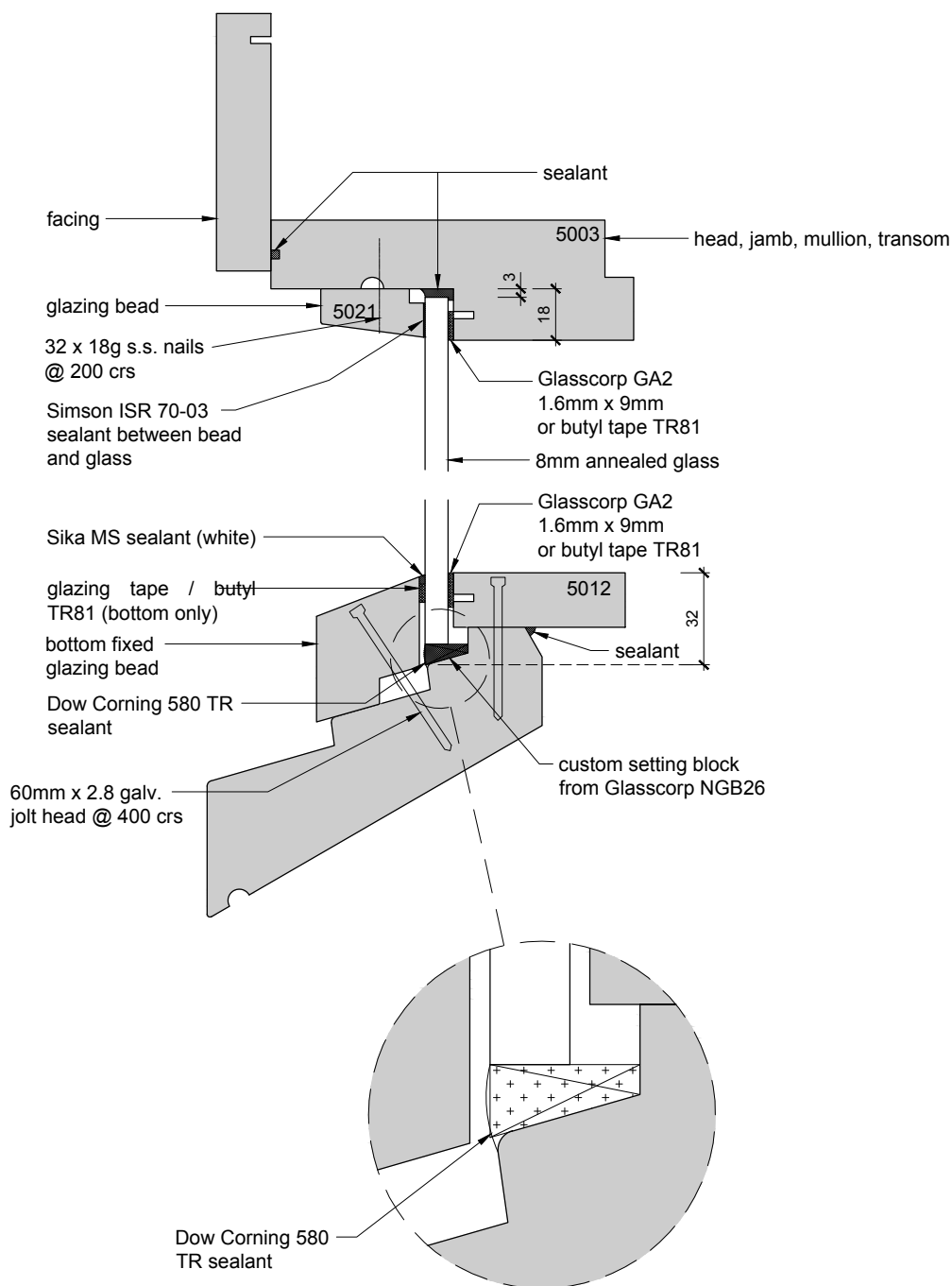
www.jmf.nz.co.nz

Glazing Method

Date: **23/05/17**

Issue: **-**

S8-A-08



Notes:

1. rebates fully primed with Resene Alkyd primer - tested window with Alkyd undercoat.
2. Glasscorp codes for backing tapes.

Glazing Type:

SINGLE GLAZED CASEMENT SILL

Window / Door Type:

DIRECT FIX TO FRAME



www.jmf.nz.co.nz

Glazing Method

Date: 23/05/17

Issue: -

S8-A-09