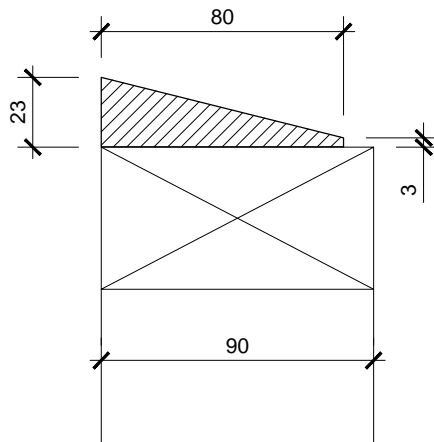
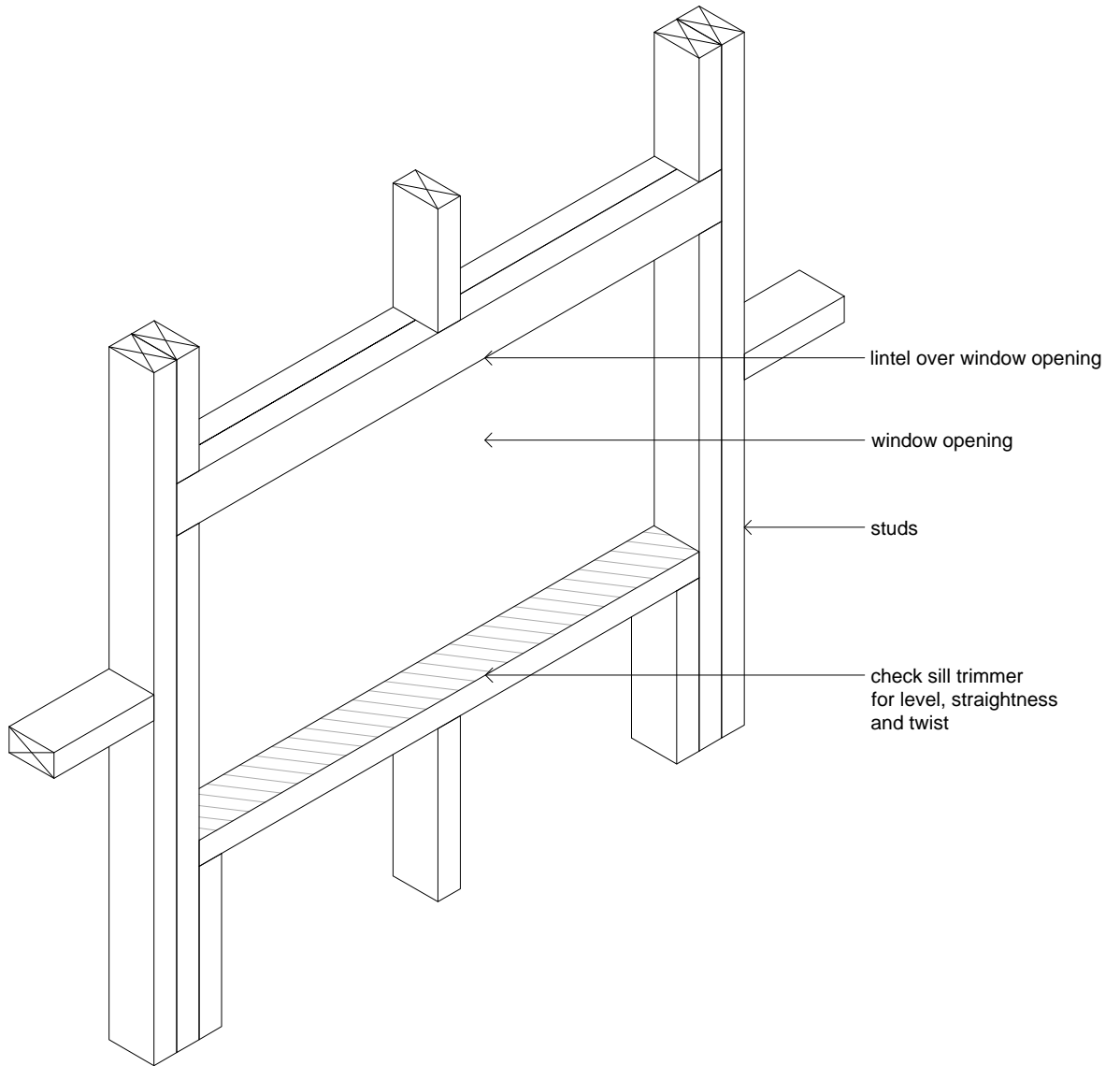


NOTE:
 BEFORE THE HOUSE WRAP IS CUT AND PREPARED
 THE SILL TRIMMER IS CHECKED FOR LEVEL,
 STRAIGHTNESS AND TWIST.
 IF REQUIRED PLANLEVEL FOR OPTIMUM
 PERFORMANCE OF THE WINDOW INSTALLATION



Sill Packer Detail
 Scale: 1:2.5

SILL PACKER FOR J.M.F. 5000 SERIES
 SILL FITTED TO BOTTOM TRIM BEFORE
 BUILDING WRAP AND CORNER TAPE.

Title:
TRIM PREPARATION

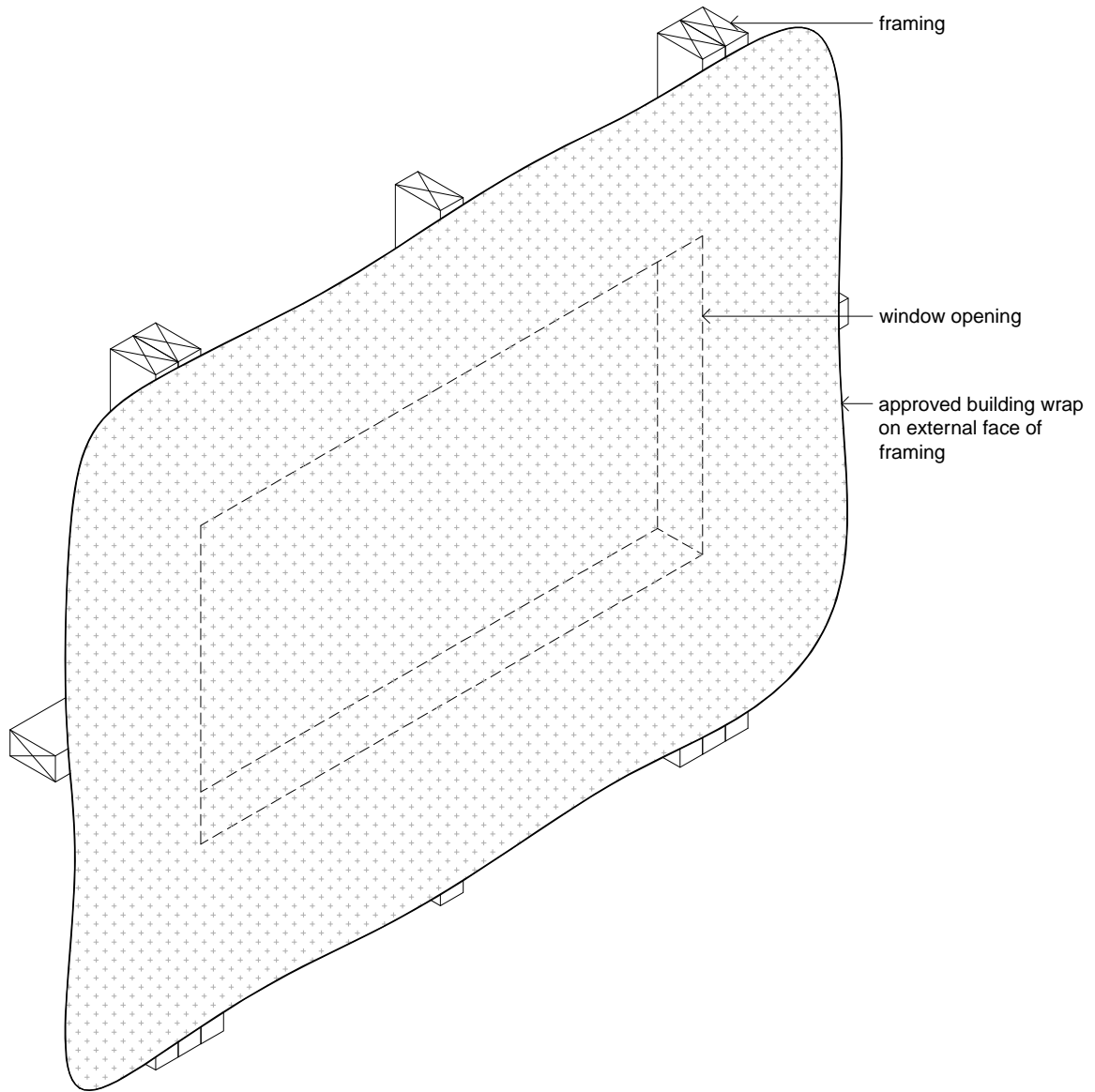
Drawing:
STEP 1- FRAMING



WINDOW INSTALLATION

Sheet: **1 of 7** Issue: **B**

P01-1



Title:
TRIM PREPARATION

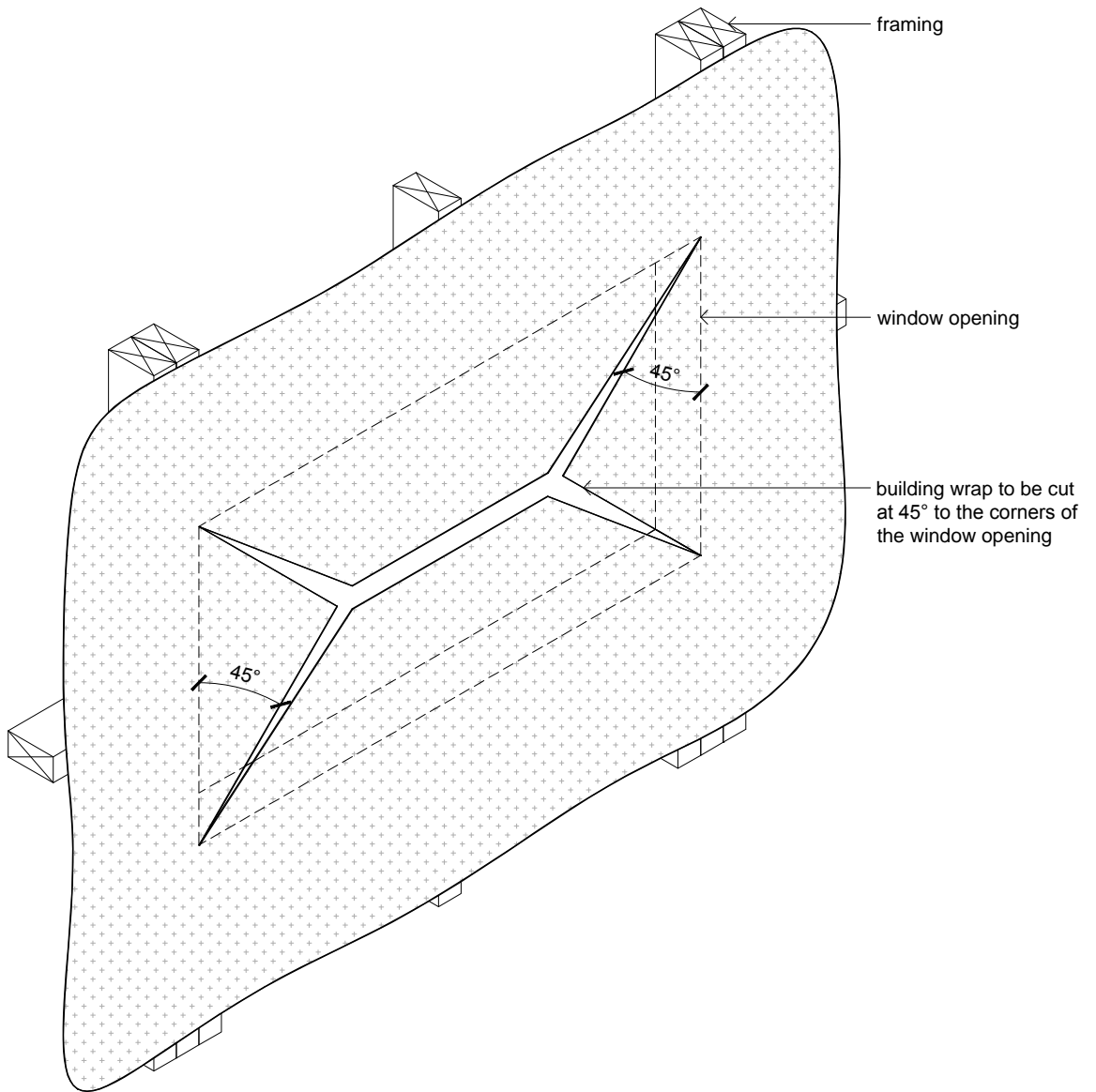
Drawing:
STEP 2 - BUILDING WRAP



WINDOW INSTALLATION

Sheet: **2 of 7** Issue: **B**

P01-1



NOTE:
 45° GIVES MAXIMUM POSSIBLE COVERAGE OF TIMBER
 WHEN THE WRAP IS FOLDED IN

Title:
TRIM PREPARATION

Drawing:
STEP 3 - BUILDING WRAP CUT

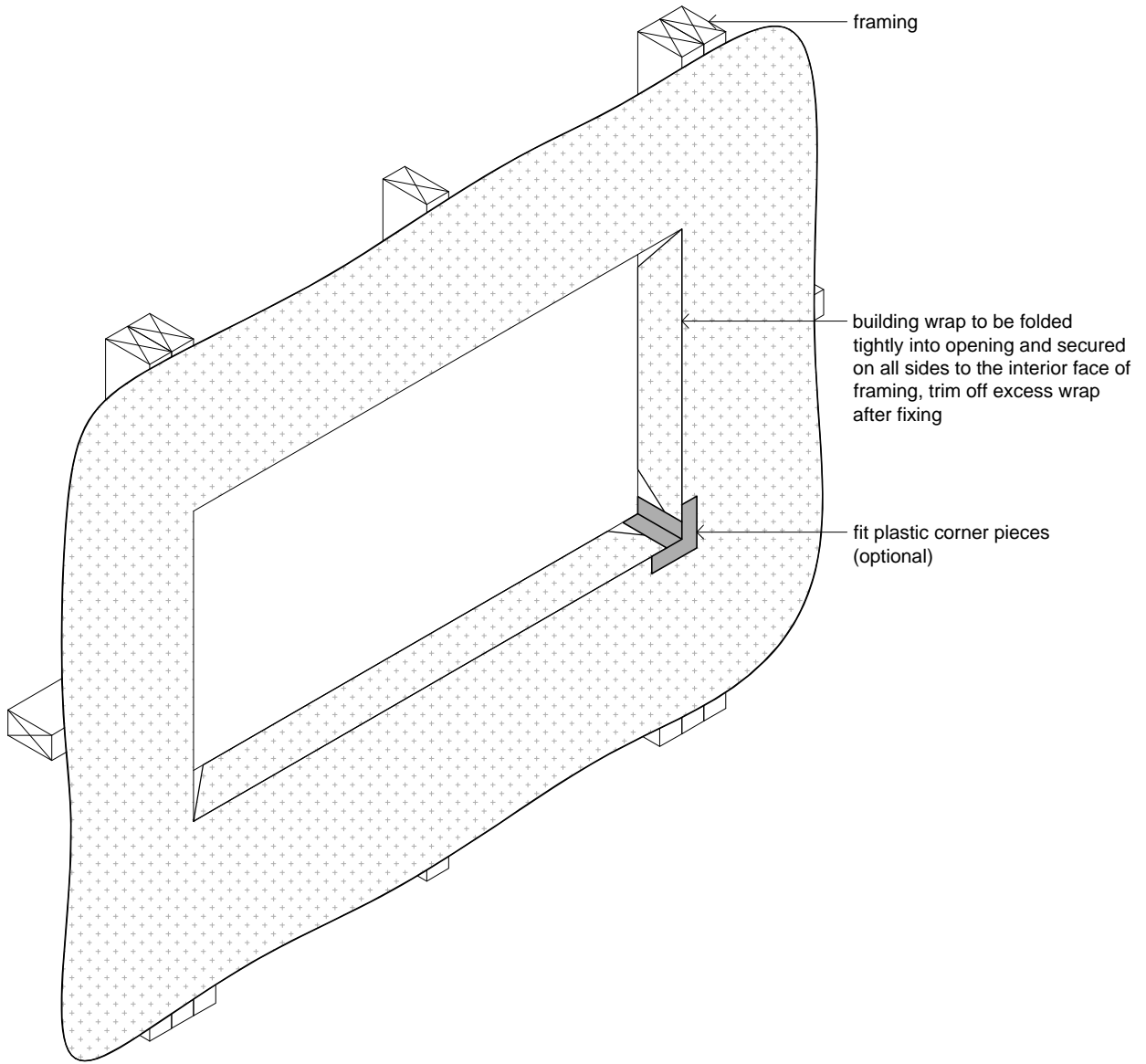


WINDOW INSTALLATION

Sheet: **3 of 7**

Issue: **B**

P01-1



Title:
TRIM PREPARATION

Drawing:
STEP 4 - BUILDING WRAP FIX



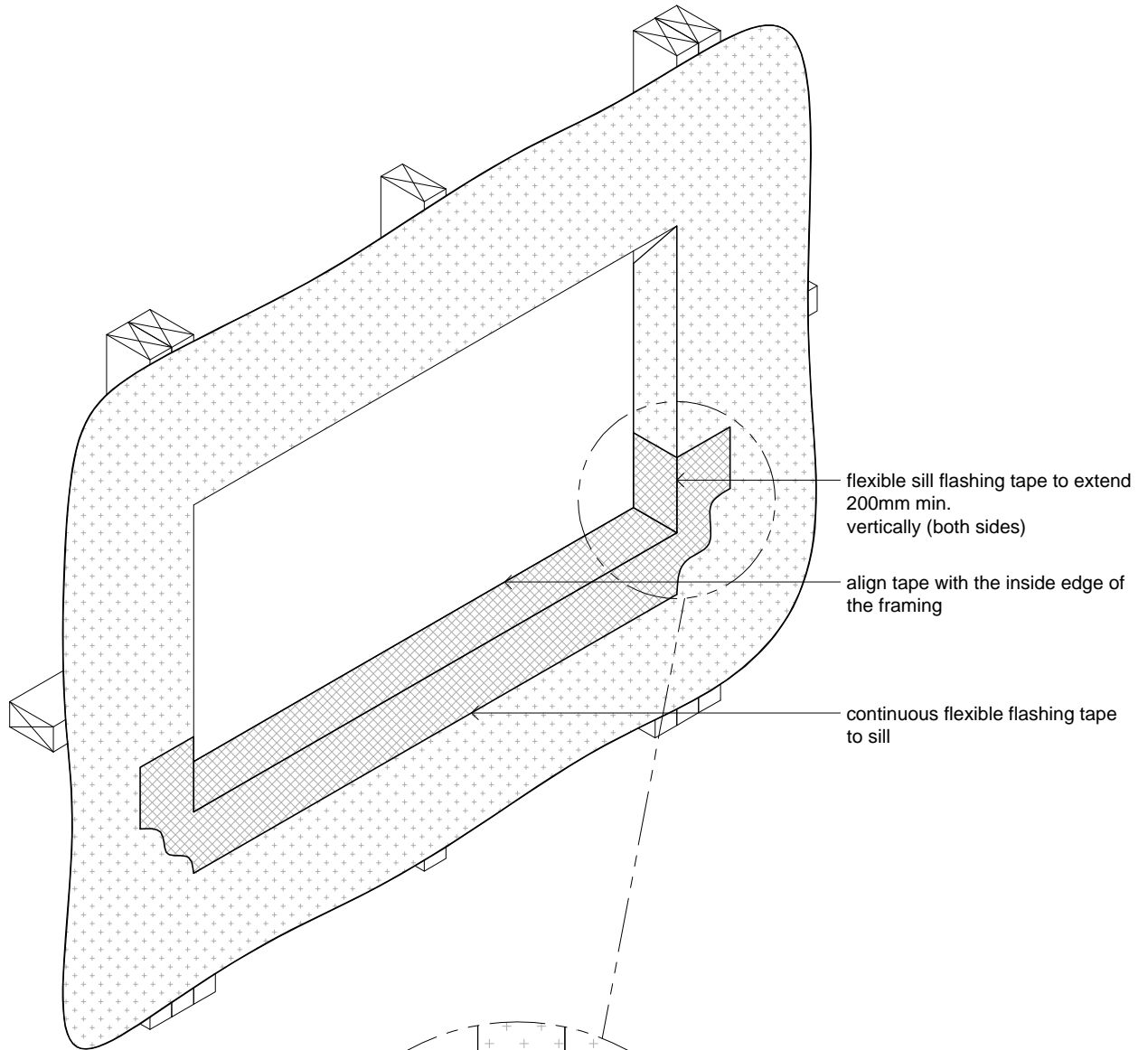
WINDOW INSTALLATION

Sheet: **4 of 7**

Issue: **B**

P01-1

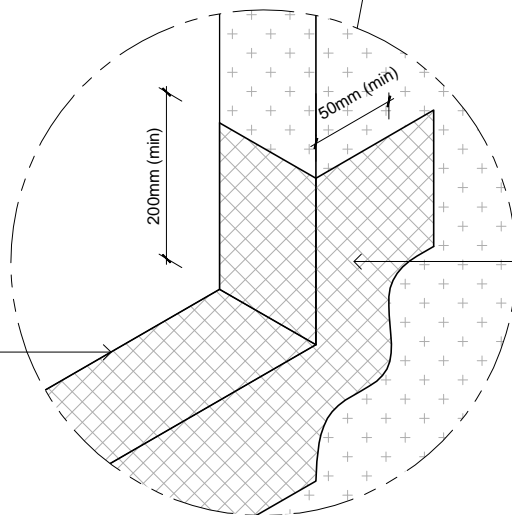
NOTE:
 INSTALLATION OF SOME PRODUCTS MAY VARY FROM THIS DESCRIPTION,
 PLEASE FOLLOW THE MANUFACTURER'S CUTTING AND FITTING
 INSTRUCTIONS IN ALL CASES AND ENSURE COMPATIBILITY BETWEEN
 PRODUCTS USED.



flexible sill flashing tape to extend
 200mm min.
 vertically (both sides)

align tape with the inside edge of
 the framing

continuous flexible flashing tape
 to sill



NOTE:
 DO NOT WRAP SILL FLASHING TAPE
 ONTO THE INTERIOR SURFACE OF THE
 FRAMING WHERE IT MAY INTERFERE
 WITH THE WALL LININGS.

NOTE:
 WHEN USING THE SLOPING SILL PACKER FIT
 THE BOTTOM FLEXIBLE FLASHING TAPE FIRST,
 THE UP STAND TAPE WILL ANGLE OUT WHEN IT
 ADHERES TO THE BUILDING WRAP, EXTRA TAPE
 WILL BE REQUIRED ON THE INSIDE TO ENSURE
 THE 200mm UP STAND.
 THIS PROCEDURE HAS BEEN TESTED

Title:
TRIM PREPARATION

Drawing:
STEP 5 - FLEXIBLE SILL FLASHING TAPE

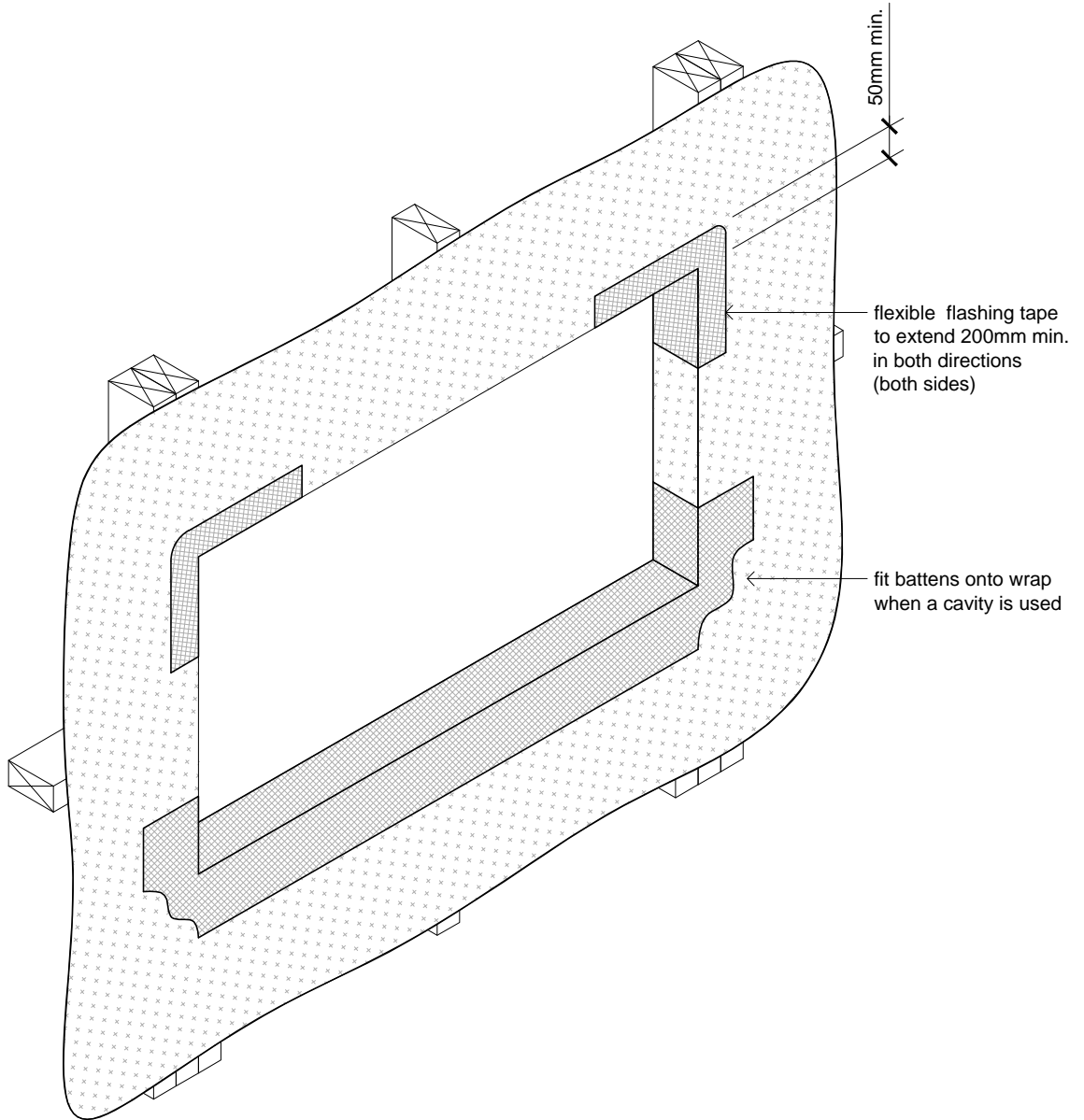


WINDOW INSTALLATION

Sheet: **5 of 7** Issue: **B**

P01-1

NOTE:
INSTALLATION OF SOME PRODUCTS MAY VARY FROM THIS DESCRIPTION,
PLEASE FOLLOW THE MANUFACTURER'S CUTTING AND FITTING
INSTRUCTIONS IN ALL CASES AND ENSURE COMPATIBILITY BETWEEN
PRODUCTS USED.



Title:

TRIM PREPARATION

Drawing:

STEP 6 - UPPER CORNERS



NEW ZEALAND LIMITED
JMF New Zealand Limited
20 Cambridge Terrace
Taradale, Napier 4112. NZ

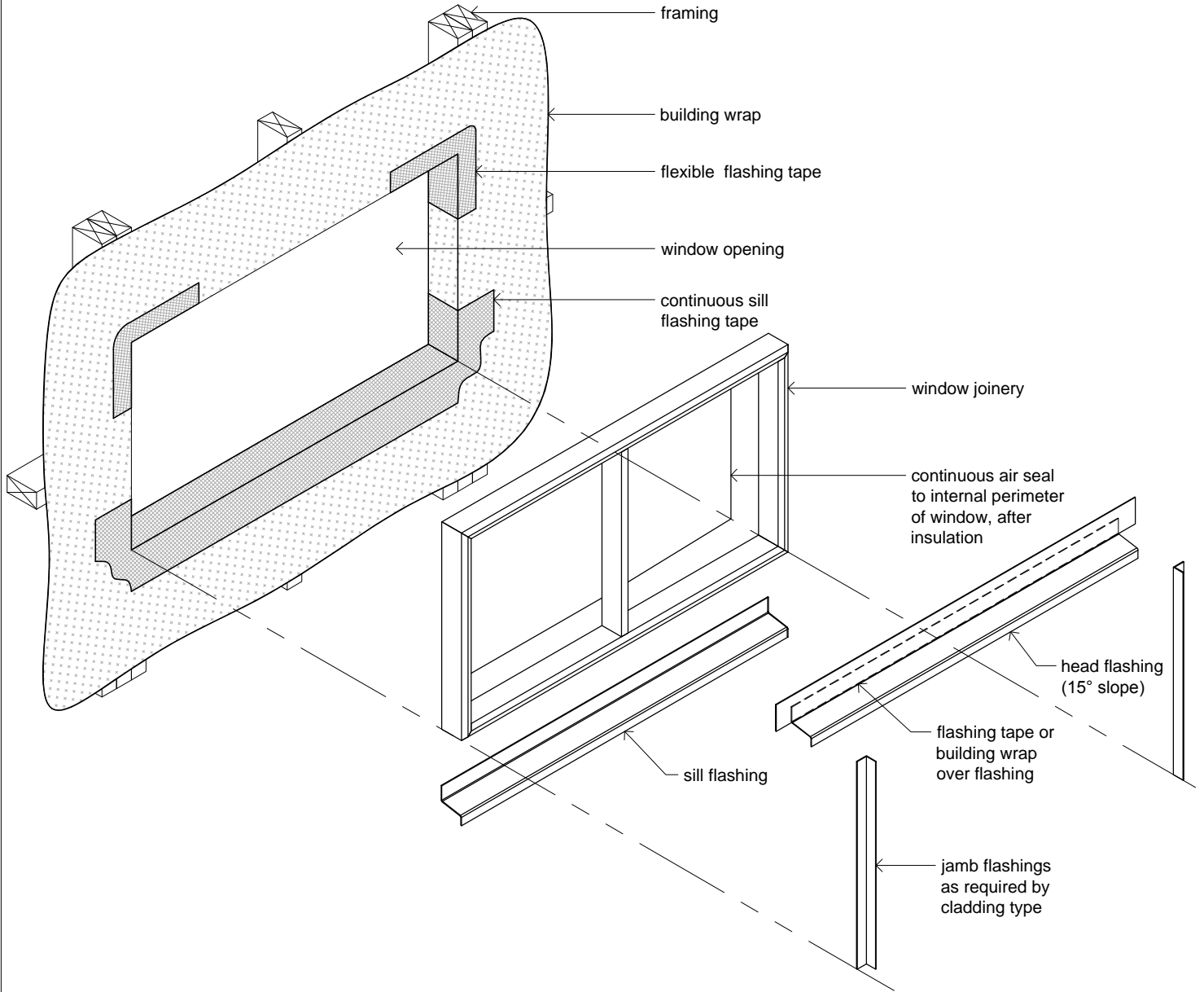
WINDOW INSTALLATION

Sheet: **6 of 7**

Issue: **B**

P01-1

NOTE:
SEE THE JMF INSTALLATION DETAILS SPECIFIC TO THE CLADDING TYPE FOR
INFORMATION REGARDING EXTERNAL FLASHINGS, EXTERNAL PERIMETER
SEALS AND OTHER WINDOW & INSTALLATION DETAILS



Title:

TRIM PREPARATION

Drawing:

STEP 7 - DIRECT FIX - COMPONENTS

JMF
NEW ZEALAND LIMITED
JMF New Zealand Limited
20 Cambridge Terrace
Taradale, Napier 4112. NZ

WINDOW INSTALLATION

Sheet: **7 of 7**

Issue: **B**

P01-1