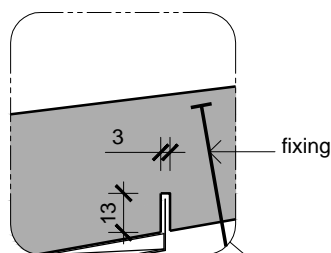


**Door Head**  
Scale: 1:2.5

**NOTE:**  
BI-FOLD LINTELS TO BE ENGINEERED TO TAKE SASH & DOOR WEIGHT.

**NOTE:**  
AT THE HEAD FLASHING ALL CLADDINGS NEED TO HAVE A SAW CUT AT THE CORRECT LOCATION TO ALLOW THE CLADDING TO BE FITTED ONTO THE FLASHING. THE SAW CUT ALLOWS THE CLADDING TO BE FITTED AS CLOSE TO THE TRIM OPENING AS POSSIBLE GIVING MAXIMUM COVER BEHIND THE FACING.



**Alternative Sill Flashing For Timber & Concrete**

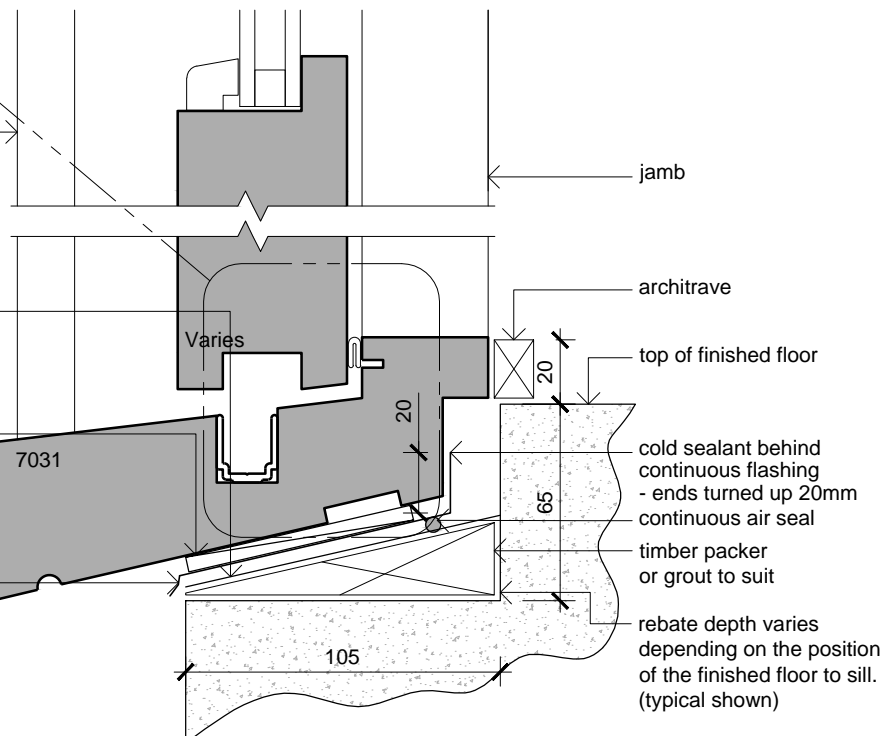
side facing

window seal tape continuous on sill 200mm up jamb

5mm packers on sill @ 400 C/C

architectural sill

full width sill tray flashing



**Door Sill**  
Scale: 1:2.5

Cladding Type:

**Weather Board Direct Fix (No Cavity)**

Window / Door Type:

**Bi-Folding Doors**

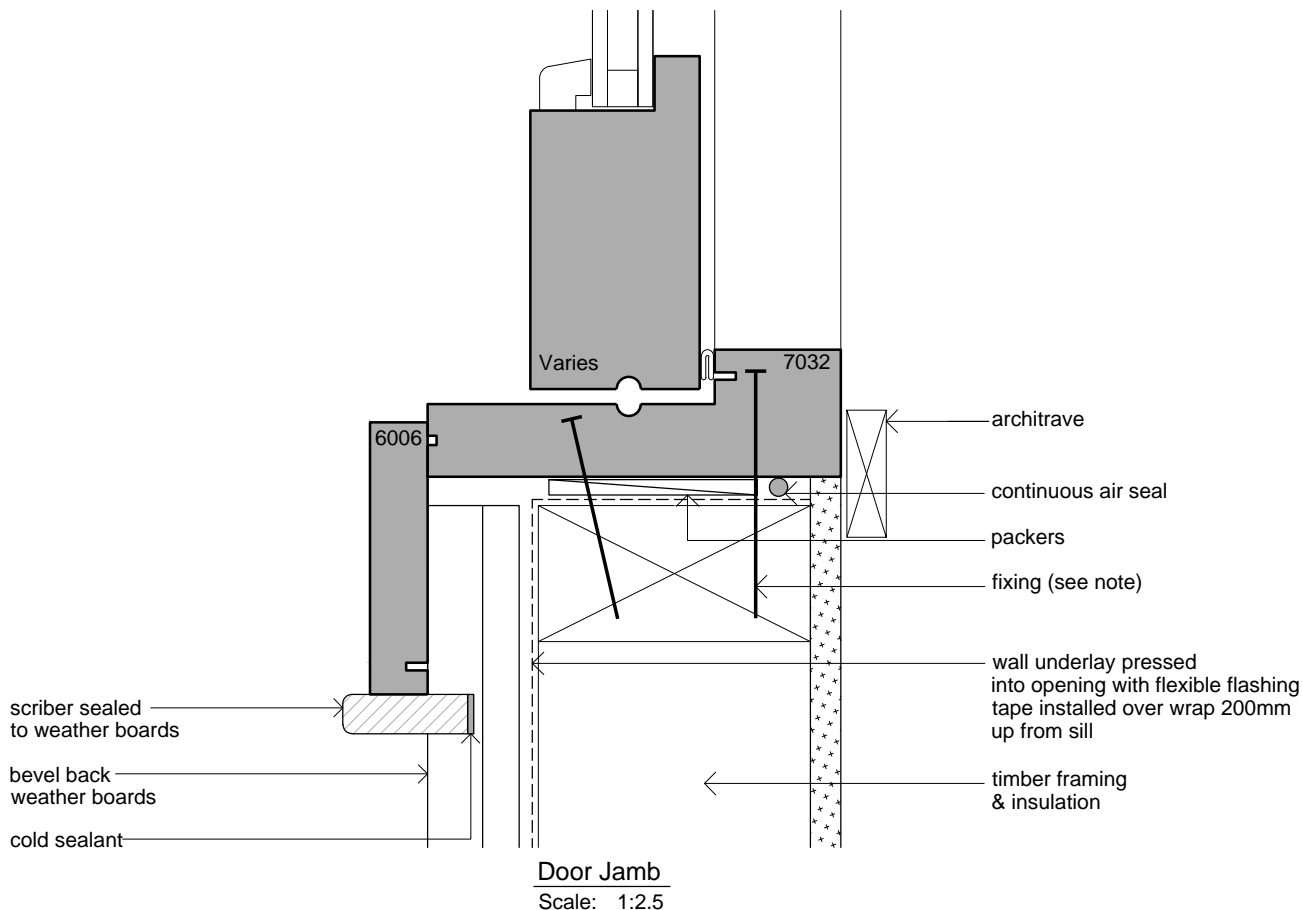
**JMF**  
NEW ZEALAND LIMITED  
JMF New Zealand Limited  
20 Cambridge Terrace  
Taradale, Napier 4112. NZ

**Installation Drawings**

Sheet: **1 of 2**

Issue: **D**

**A02-22**



**NOTE:**

1. COLD SEALANT NEUTRAL CURE MODIFIED SILICONE.
2. SCREW OR NAIL FIXING JAMBS 200mm FROM HEAD AND SILL MAXIMUM 600 CENTRES.
3. SILL FLASHINGS TURNED UP 20mm AT EACH END OF FRAMES AND SEALED.
4. FIXING THROUGH SILL AS SHOWN ON DRAWINGS.
5. SITE FIXED FACINGS MUST HAVE COLD SEALANT BETWEEN FACING AND JAMB.

Cladding Type:

**Weather Board Direct Fix (No Cavity)**

Window / Door Type:

**Bi-Folding Doors**



NEW ZEALAND LIMITED  
JMF New Zealand Limited  
20 Cambridge Terrace  
Taradale, Napier 4112. NZ

**Installation Drawings**

Sheet: **2 of 2**

Issue: **D**

**A02-22**