

additional wall underlay
from overlap above
lapped over flashing
flashing end stop
cavity base closure

plaster system on
rigid or non rigid
backing

packers

head flashing with
15 degree slope.

drip
edge
20

50
flashing cover

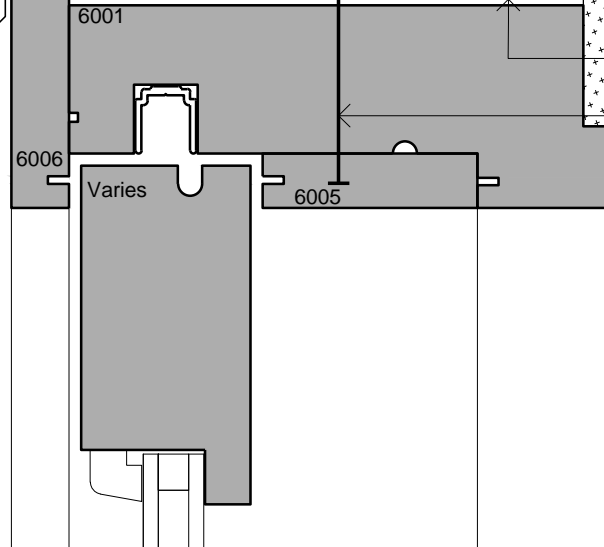
wall underlay pressed
into opening with flexible
flashing tape installed over
wrap to corners at head

continuous air seal
on backing rod

packers

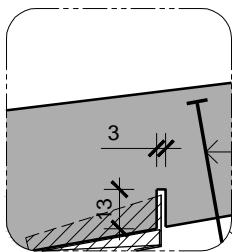
screw fixing (see note)

architrave

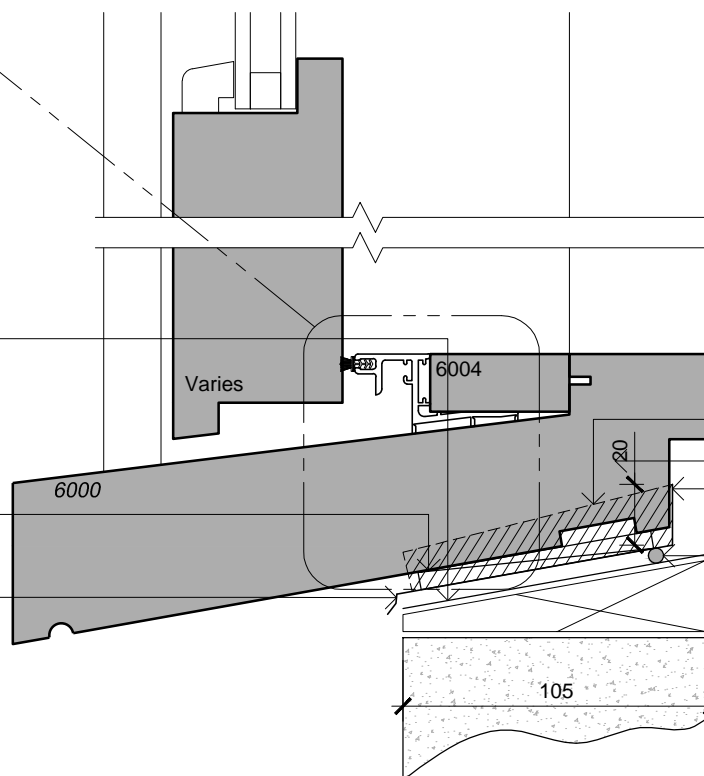


Door Head

Scale: 1:2.5



**Alternative Sill Flashing
For Timber & Concrete**



Door Sill

Scale: 1:2.5

window seal
tape continuous
on sill 200mm
up jamb

packers

sill tray with
stop end
15° slope

architrave

top of finished floor
sill flashing /
20mm stop end

cold sealant behind
continuous flashing
- ends turned up 20mm
continuous air seal
on backing rod
timber packer
or grout to suit

rebate depth varies
depending on the position
of the finished floor to sill.
(typical shown)

Cladding Type:

Plaster on Cavity

Window / Door Type:

Slider / Stacker Doors

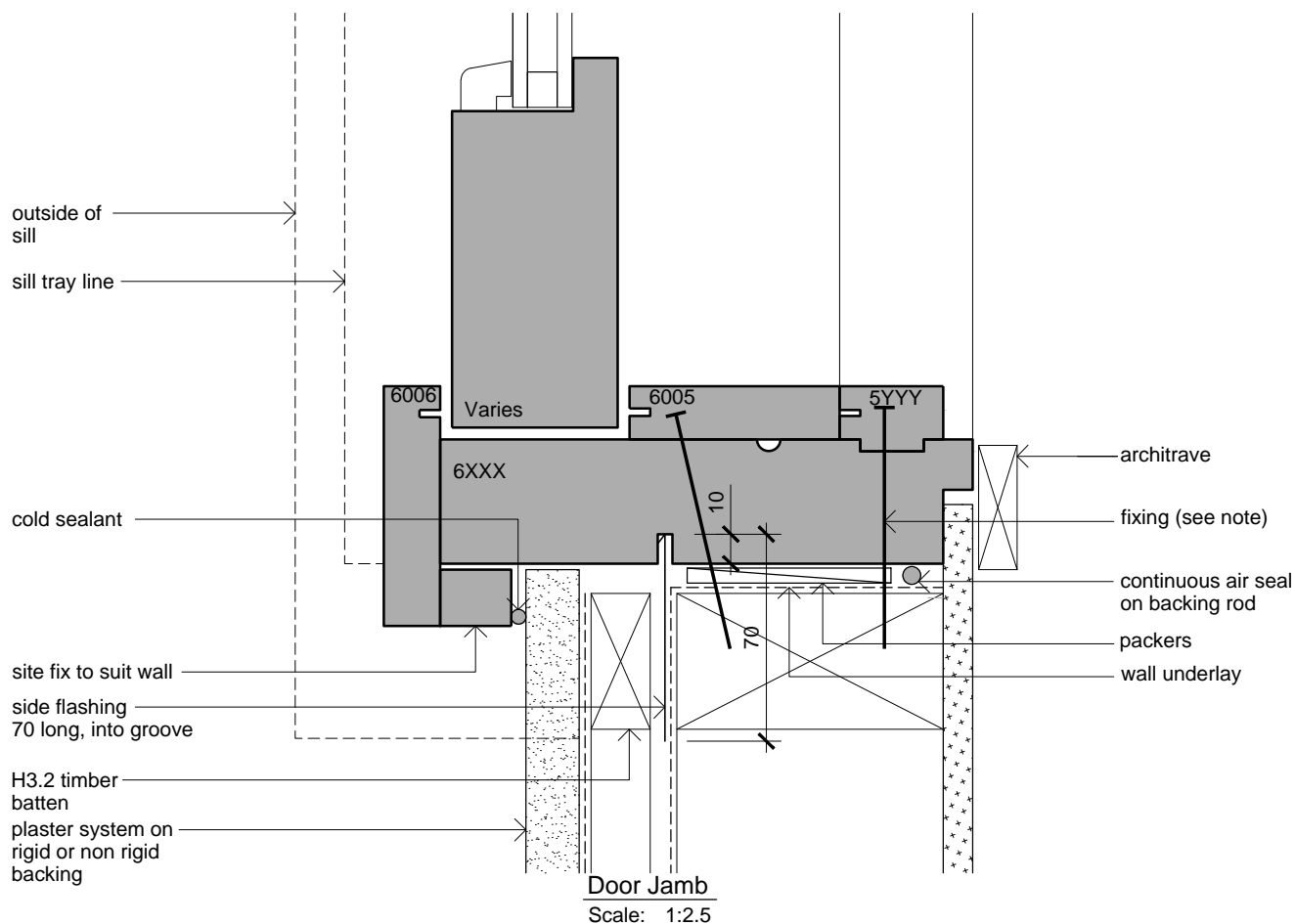
JMF
NEW ZEALAND LIMITED
JMF New Zealand Limited
20 Cambridge Terrace
Taradale, Napier 4112. NZ

Installation Drawings

Sheet: **1 of 2**

Issue: **D**

A03-32



NOTE:

1. COLD SEALANT NEUTRAL CURE MODIFIED SILICONE.
2. SCREW OR NAIL FIXING JAMBS 200mm FROM HEAD AND SILL MAXIMUM 600 CENTRES.
3. SILL FLASHINGS TURNED UP 20mm AT EACH END OF FRAMES AND SEALED.
4. FIXING THROUGH SILL AS SHOWN ON DRAWINGS.
5. SITE FIXED FACINGS MUST HAVE COLD SEALANT BETWEEN FACING AND JAMB.

Cladding Type:

Plaster on Cavity

Window / Door Type:

Slider / Stacker Doors



NEW ZEALAND LIMITED
JMF New Zealand Limited
20 Cambridge Terrace
Taradale, Napier 4112. NZ

Installation Drawings

Sheet: **2 of 2**

Issue: **D**

A03-32