

Cladding Type:

Vertical Board (Direct Fix)

Window / Door Type:

Bi-Folding Doors

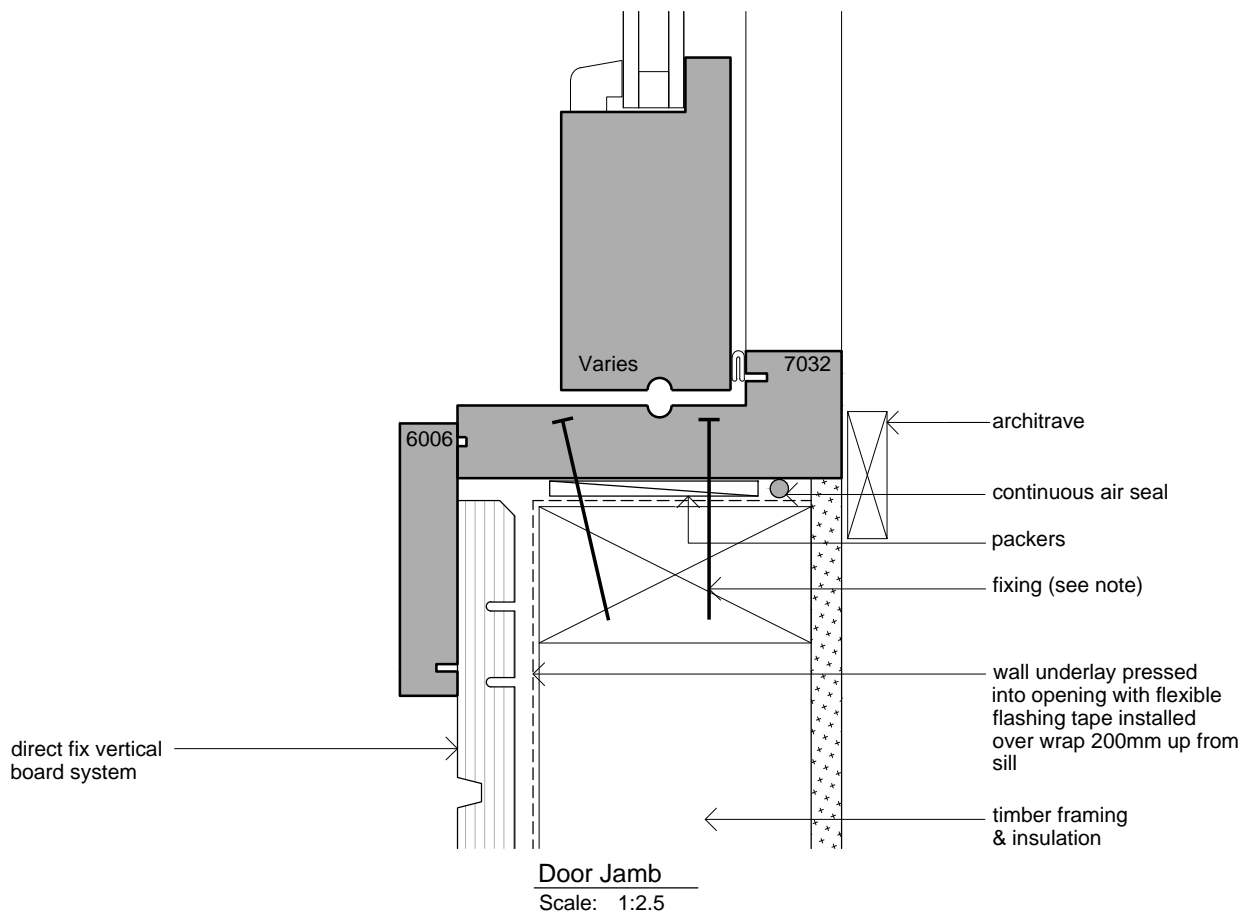
JMF
NEW ZEALAND LIMITED
JMF New Zealand Limited
20 Cambridge Terrace
Taradale, Napier 4112. NZ

Installation Drawings

Sheet: **1 of 2**

Issue: **D**

A04-22



- NOTE:**
1. COLD SEALANT NEUTRAL CURE MODIFIED SILICONE.
 2. SCREW OR NAIL FIXING JAMBS 200mm FROM HEAD AND SILL MAXIMUM 600 CENTRES.
 3. SILL FLASHINGS TURNED UP 20mm AT EACH END OF FRAMES AND SEALED.
 4. FIXING THROUGH SILL AS SHOWN ON DRAWINGS.
 5. SITE FIXED FACINGS MUST HAVE COLD SEALANT BETWEEN FACING AND JAMB.

Cladding Type:

Vertical Board (Direct Fix)

Window / Door Type:

Bi-Folding Doors



Installation Drawings

Sheet: **2 of 2**

Issue: **D**

A04-22