

additional wall underlay
from overlap above
lapped over flashing

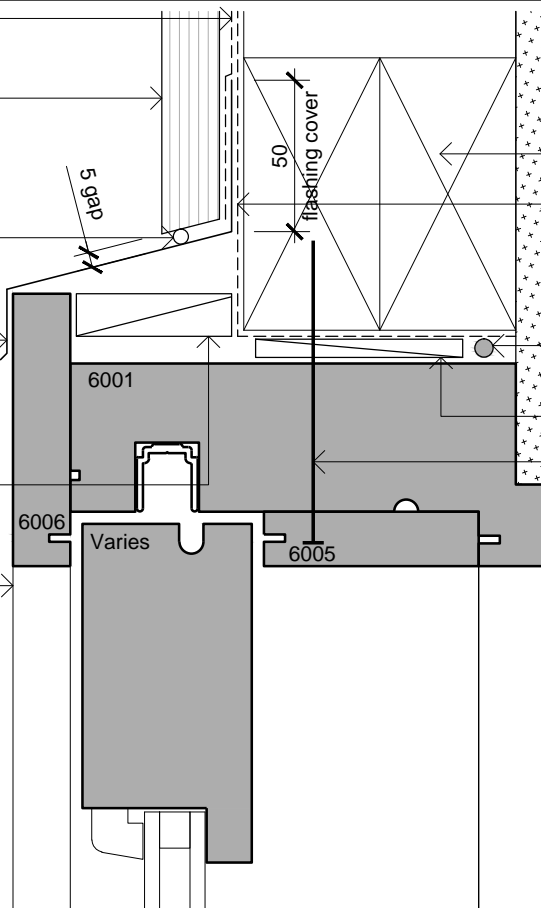
direct fix vertical board
system

50mm long sealant
strip at both ends
of flashing

head flashing with
15 degree slope.
15mm high stop ends.
cold sealant between
flashing & battten

packers

side facing



GIB board

timber lintel
by others

wall underlay pressed
into opening with flexible
flashing tape installed over
wrap to corners at head

continuous air seal
over backing rod

packers

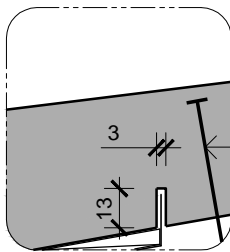
screw fixing (see note)

architrave

Window Head

Scale: 1:2.5

NOTE:
AT THE HEAD FLASHING ALL CLADDINGS NEED
TO HAVE A SAW CUT AT THE CORRECT
LOCATION TO ALLOW THE CLADDING TO BE
FITTED ONTO THE FLASHING. THE SAW CUT
ALLOWS THE CLADDING TO BE FITTED AS
CLOSE TO THE TRIM OPENING AS POSSIBLE
GIVING MAXIMUM COVER BEHIND THE FACING.



**Alternative Sill Flashing
For Timber & Concrete**

side facing

5mm packers
on sill @ 400 C/C

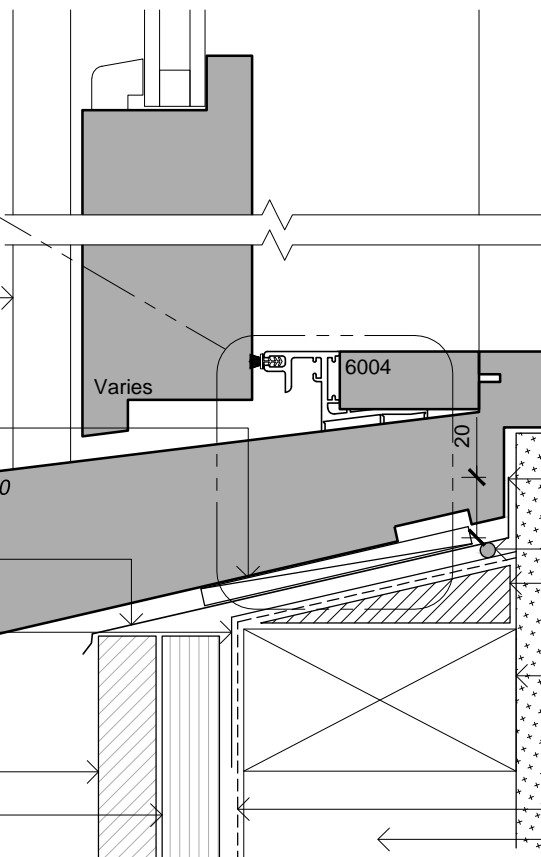
architectural
sill

full width sill tray
flashing

window seal
tape continuous
on sill 200mm
up jamb

batten

direct fix vertical
board system



jamb

architrave

cold sealant behind
continuous flashing
- ends turned up 20mm

continuous air seal

sill packer

timber framing

GIB board

building wrap

insulation

Window Sill

Scale: 1:2.5

Cladding Type:

Board & Batten

Window / Door Type:

Slider / Stacker Windows



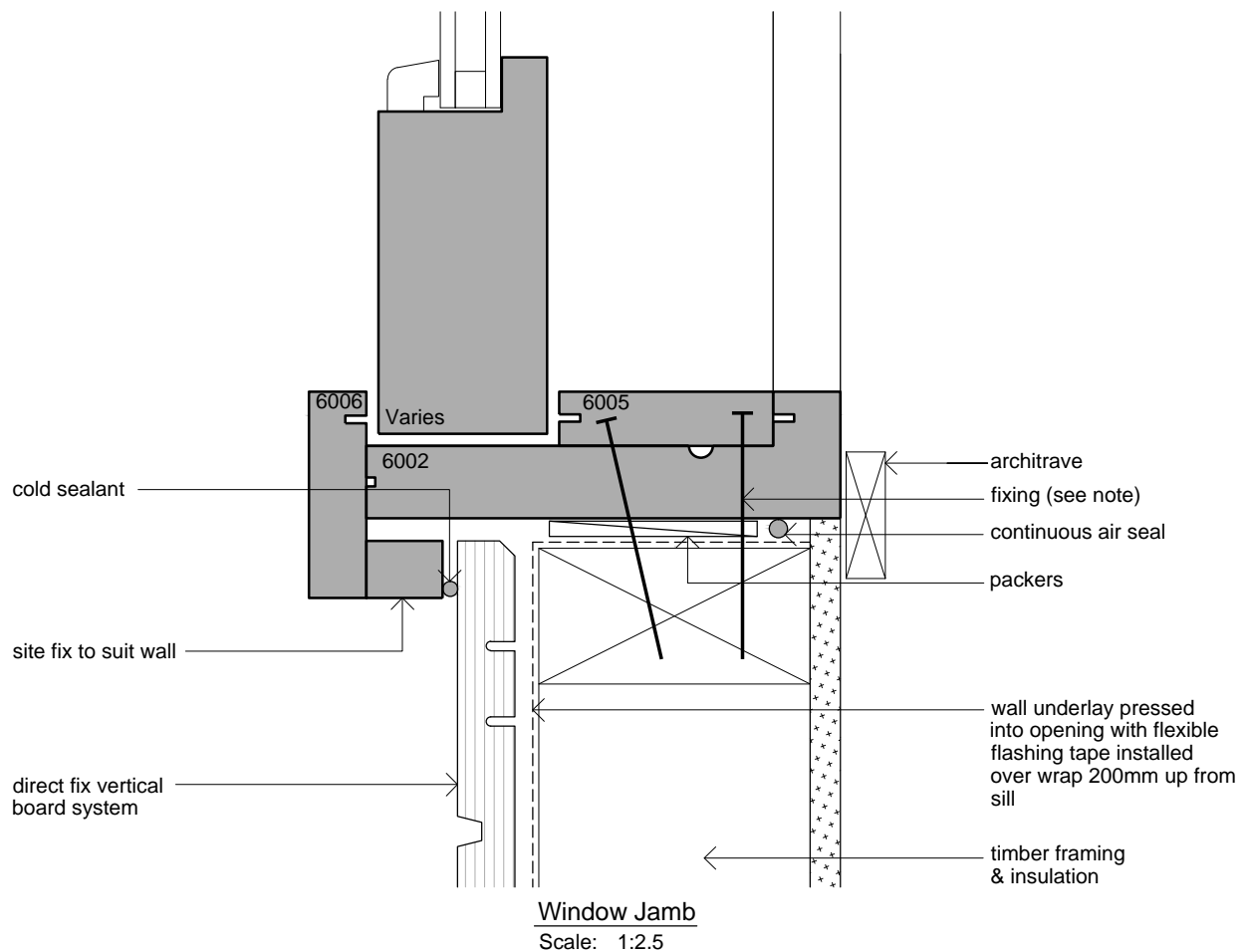
NEW ZEALAND LIMITED
JMF New Zealand Limited
20 Cambridge Terrace
Taradale, Napier 4112. NZ

Installation Drawings

Sheet: **1 of 2**

Issue: **E**

A05-31



NOTE:

1. COLD SEALANT NEUTRAL CURE MODIFIED SILICONE.
2. SCREW OR NAIL FIXING JAMBS 200mm FROM HEAD AND SILL MAXIMUM 600 CENTRES.
3. SILL FLASHINGS TURNED UP 20mm AT EACH END OF FRAMES AND SEALED.
4. FIXING THROUGH SILL AS SHOWN ON DRAWINGS.
5. SITE FIXED FACINGS MUST HAVE COLD SEALANT BETWEEN FACING AND JAMB.

Cladding Type:

Board & Batten

Window / Door Type:

Slider / Stacker Windows

JMF
NEW ZEALAND LIMITED
JMF New Zealand Limited
20 Cambridge Terrace
Taradale, Napier 4112. NZ

Installation Drawings

Sheet: **2 of 2**

Issue: **E**

A05-31