

additional wall underlay
from overlap above
lapped over flashing

direct fix vertical board
system

50mm long sealant
strip at both ends
of flashing

head flashing with
15 degree slope.
15mm high stop ends.
cold sealant between
flashing & battten

packers

side facing

50
flashing cover

GIB board

timber lintel
by others

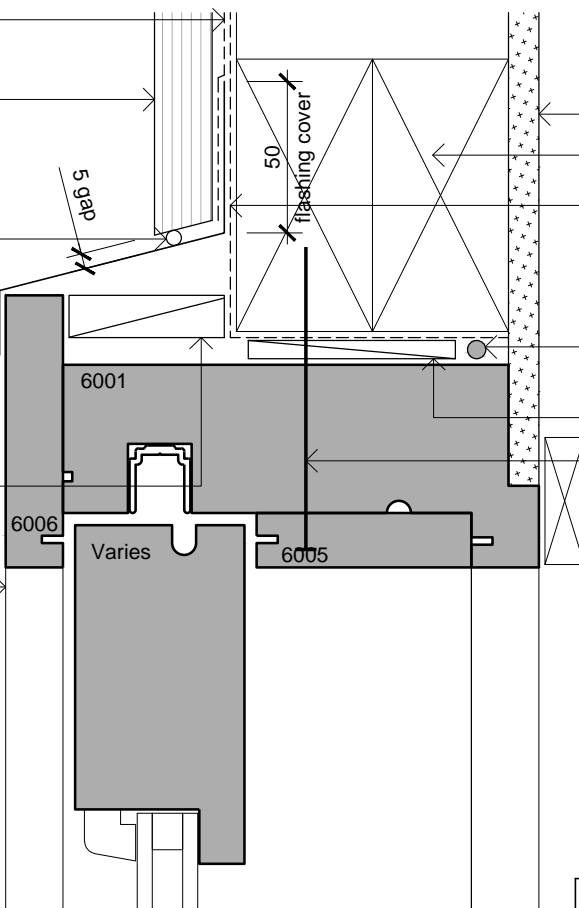
wall underlay pressed
into opening with flexible
flashing tape installed over
wrap to corners at head

continuous air seal
over backing rod

packers

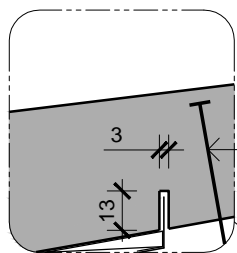
screw fixing (see note)

architrave



Door Head
Scale: 1:2.5

NOTE:
AT THE HEAD FLASHING ALL CLADDINGS NEED
TO HAVE A SAW CUT AT THE CORRECT
LOCATION TO ALLOW THE CLADDING TO BE
FITTED ONTO THE FLASHING. THE SAW CUT
ALLOWS THE CLADDING TO BE FITTED AS
CLOSE TO THE TRIM OPENING AS POSSIBLE
GIVING MAXIMUM COVER BEHIND THE FACING.



**Alternative Sill Flashing
For Timber & Concrete**

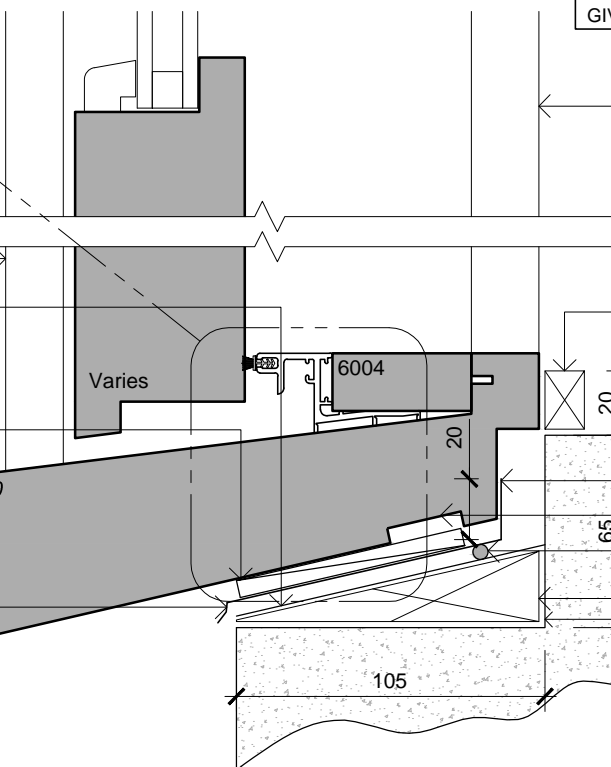
side facing

window seal
tape continuous
on sill 200mm
up jamb

5mm packers
on sill @ 400 C/C

architectural
sill

full width sill tray
flashing



jamb

architrave

top of finished floor

cold sealant behind
continuous flashing
- ends turned up 20mm
continuous air seal

timber paker
or grout to suit

rebate depth varies
depending on the position
of the finished floor to sill.
(typical shown)

Door Sill
Scale: 1:2.5

Cladding Type:

Board & Batten

Window / Door Type:

Slider / Stacker Doors

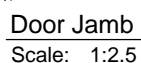
JMF
NEW ZEALAND LIMITED
JMF New Zealand Limited
20 Cambridge Terrace
Taradale, Napier 4112. NZ

Installation Drawings

Sheet: **1 of 2**

Issue: **D**

A05-32



1. COLD SEALANT NEUTRAL CURE MODIFIED SILICONE.
2. SCREW OR NAIL FIXING JAMBS 200mm FROM HEAD AND SILL MAXIMUM 600 CENTRES.
3. SILL FLASHINGS TURNED UP 20mm AT EACH END OF FRAMES AND SEALED.
4. FIXING THROUGH SILL AS SHOWN ON DRAWINGS.
5. SITE FIXED FACINGS MUST HAVE COLD SEALANT BETWEEN FACING AND JAMB.