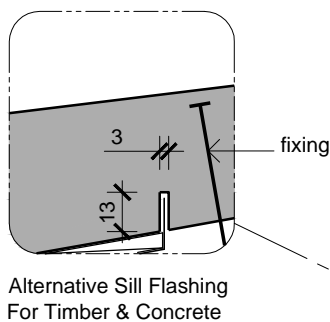
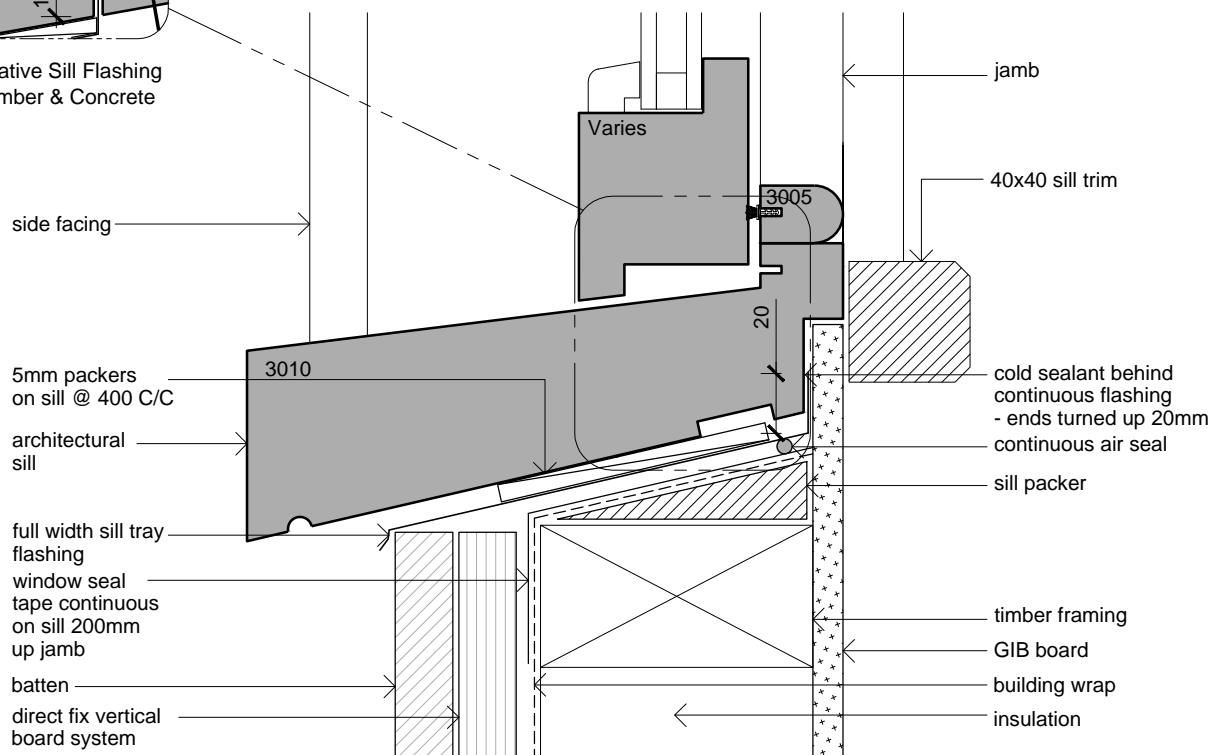


Window Head
Scale: 1:2.5

NOTE:
AT THE HEAD FLASHING ALL CLADDINGS NEED TO HAVE A SAW CUT AT THE CORRECT LOCATION TO ALLOW THE CLADDING TO BE FITTED ONTO THE FLASHING. THE SAW CUT ALLOWS THE CLADDING TO BE FITTED AS CLOSE TO THE TRIM OPENING AS POSSIBLE GIVING MAXIMUM COVER BEHIND THE FACING.



**Alternative Sill Flashing
For Timber & Concrete**



Window Sill
Scale: 1:2.5

Cladding Type:

Board & Batten

Window / Door Type:

Double Hung Windows

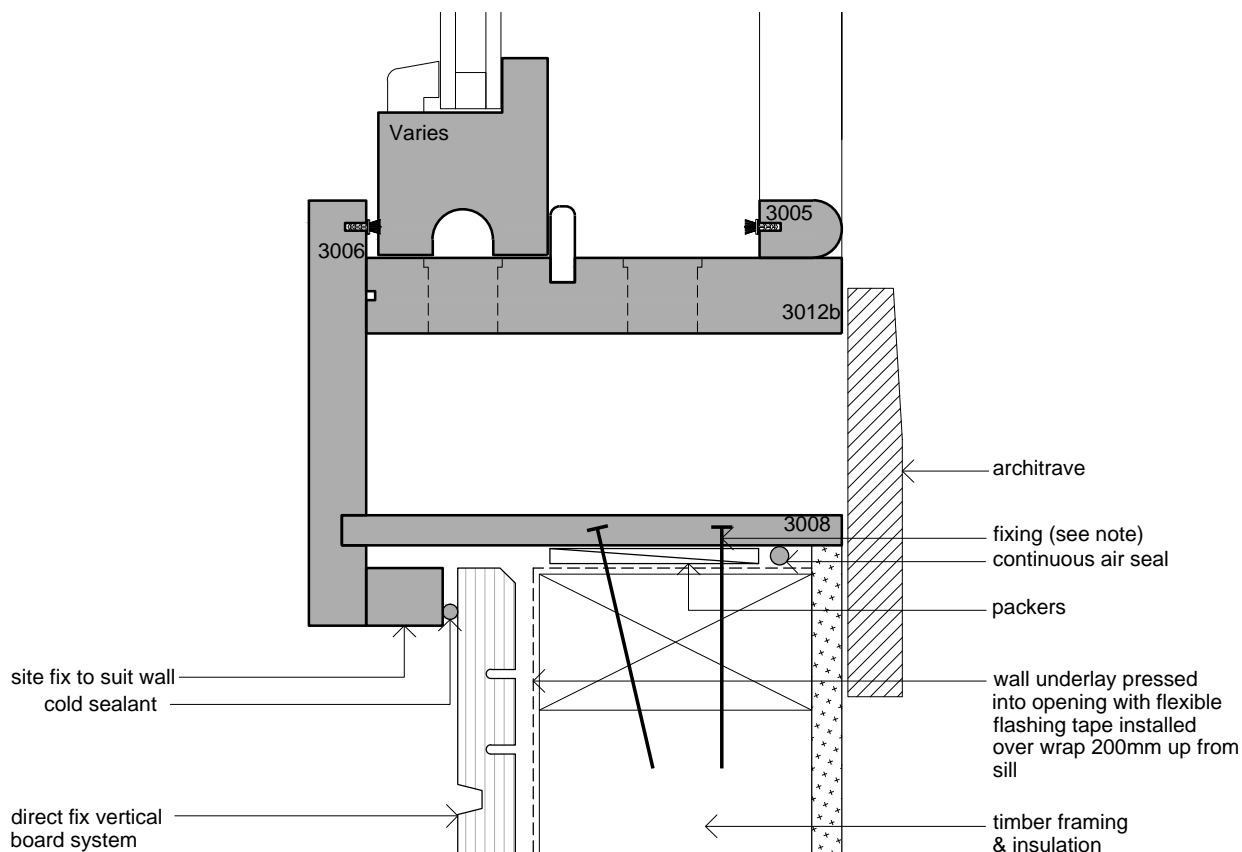


Installation Drawings

Sheet: **1 of 2**

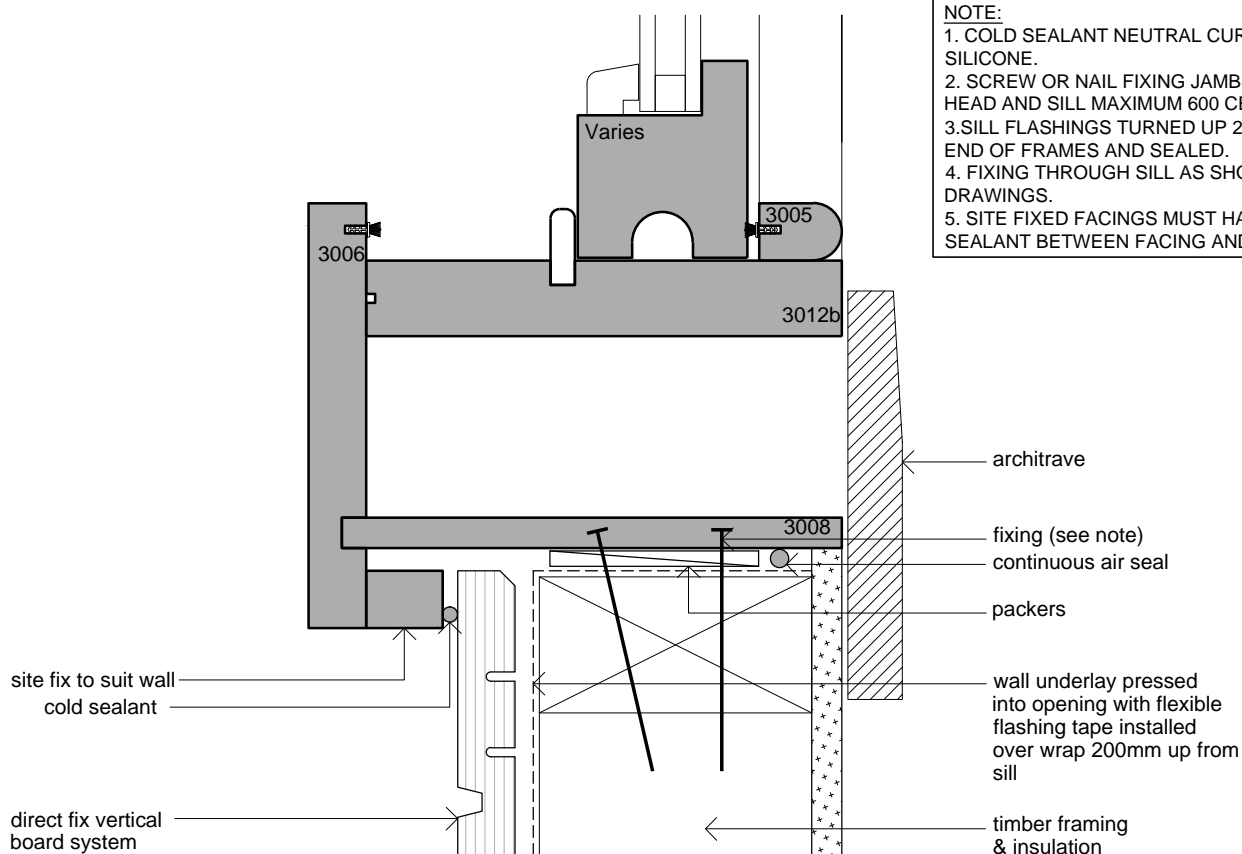
Issue: **F**

A05-41



Window Jamb (Upper)
Scale: 1:2.5

- NOTE:**
1. COLD SEALANT NEUTRAL CURE MODIFIED SILICONE.
 2. SCREW OR NAIL FIXING JAMBS 200mm FROM HEAD AND SILL MAXIMUM 600 CENTRES.
 3. SILL FLASHINGS TURNED UP 20mm AT EACH END OF FRAMES AND SEALED.
 4. FIXING THROUGH SILL AS SHOWN ON DRAWINGS.
 5. SITE FIXED FACINGS MUST HAVE COLD SEALANT BETWEEN FACING AND JAMB.



Window Jamb (Lower)
Scale: 1:2.5

Cladding Type:

Board & Batten

Window / Door Type:

Double Hung Windows



Installation Drawings

Sheet: **2 of 2**

Issue: **F**

A05-41